

DAVID J. MEYER
VICE PRESIDENT AND CHIEF COUNSEL FOR
REGULATORY & GOVERNMENTAL AFFAIRS
AVISTA CORPORATION
P.O. BOX 3727
1411 EAST MISSION AVENUE
SPOKANE, WASHINGTON 99220-3727
TELEPHONE: (509) 495-4316
FACSIMILE: (509) 495-8851
DAVID.MEYER@AVISTACORP.COM

BEFORE THE IDAHO PUBLIC UTILITIES COMMISSION

IN THE MATTER OF THE APPLICATION)	CASE NO. AVU-E-15-05
OF AVISTA CORPORATION FOR THE)	CASE NO. AVU-G-15-01
AUTHORITY TO INCREASE ITS RATES)	
AND CHARGES FOR ELECTRIC AND)	
NATURAL GAS SERVICE TO ELECTRIC)	EXHIBIT NO. 1
AND NATURAL GAS CUSTOMERS IN THE)	
STATE OF IDAHO)	SCOTT L. MORRIS
_____)	

FOR AVISTA CORPORATION

(ELECTRIC AND NATURAL GAS)

Avista Utilities provides electric and natural gas service within a 26,000 square mile area of eastern Washington and northern Idaho¹. Of the Company's 370,194 electric and 329,722 natural gas customers (as of December 31, 2014), 127,134 and 78,061, respectively, were Idaho customers. The Company, headquartered in Spokane, also provides natural gas distribution service in southwestern and northeastern Oregon. A diagram of the Company's Corporate Structure is shown in Exhibit No. 1, Schedule 1 page 2. A map showing Avista's electric and natural gas service areas is provided in Exhibit No. 1, Schedule 2.

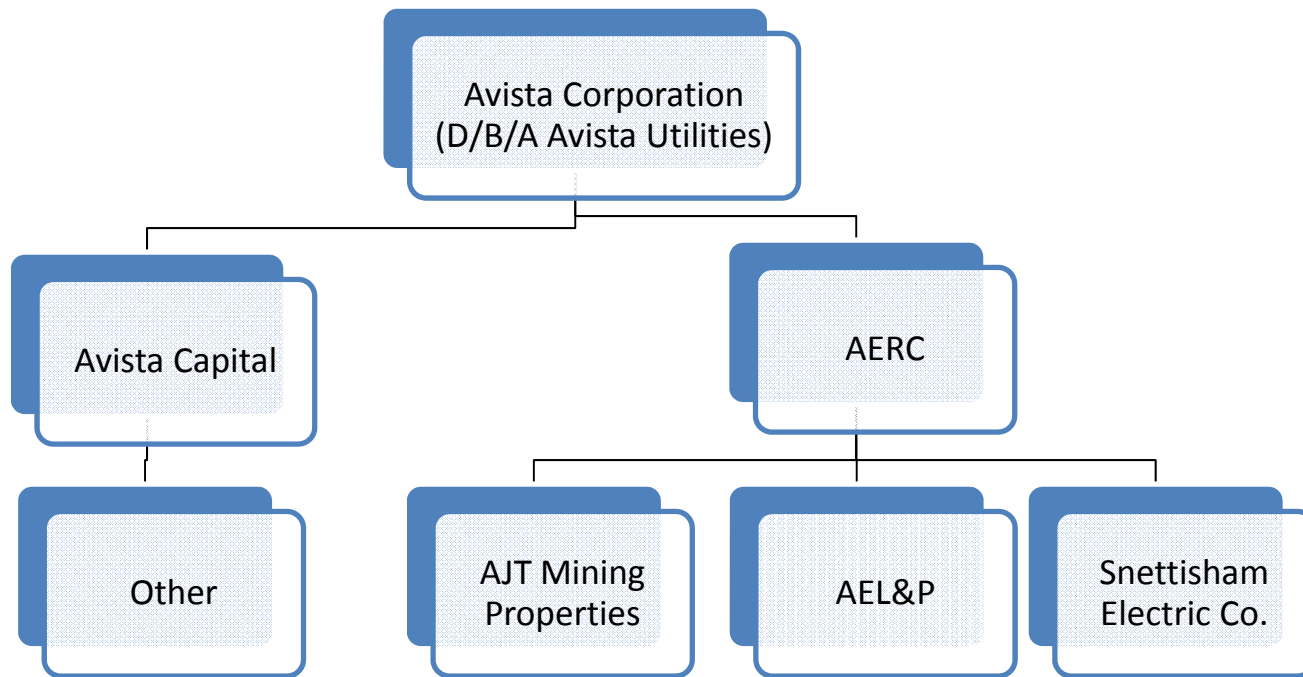
As of December 31, 2014, Avista Utilities had total assets (electric and natural gas) of approximately \$4.2 billion (on a system basis), with electric retail revenues of \$758 million (system) and natural gas retail revenues of \$314 million (system). As of December 2014, the Utility had 1,658 employees.

On June 30, 2014, the Company completed the sale of its former Ecova business unit to Cofely USA Inc, an indirect subsidiary of GDF SUEZ, a French multinational utility company.

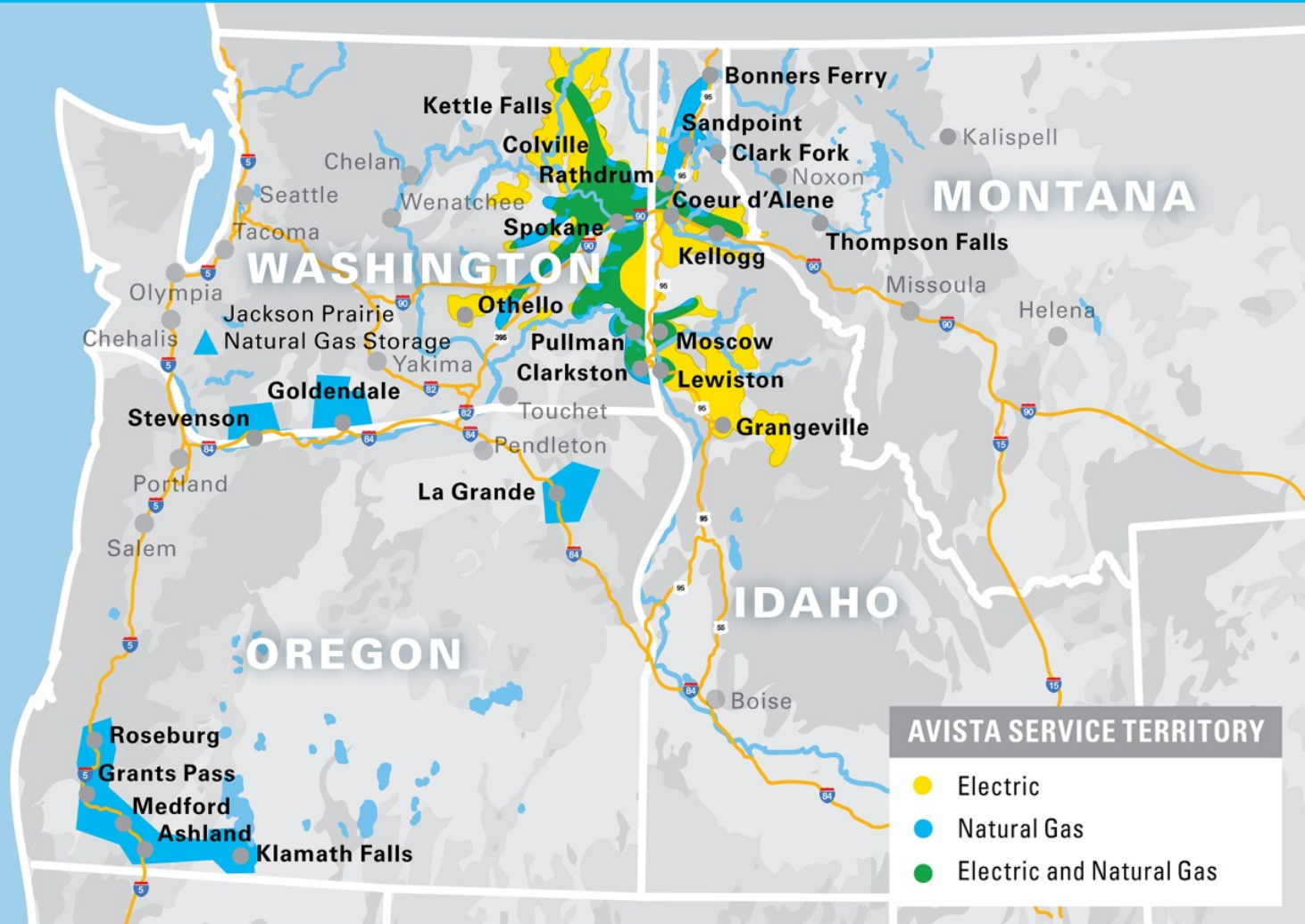
On July 1, 2014, the Company acquired Alaska Energy and Resources Company (AERC) by issuing Avista common stock to the holders of AERC common stock in exchange for their shares. AERC's primary subsidiary is Alaska Electric Light and Power Company (AEL&P), which provides electric service to the City and Borough of Juneau, Alaska.

AERC became a wholly-owned corporation of Avista. AEL&P, a vertically integrated electric utility providing electric service to the City and Borough of Juneau, continues to be a wholly-owned corporation of AERC, operating independently of Avista Utilities. AERC and AEL&P are separate legal entities and their debt is backed by the assets and equity of AERC and AEL&P, and holders of their debt have no recourse against Avista. Avista does not provide collateral or guarantees related to AERC or AEL&P debt. The debt and equity of AERC are excluded from the capital structure proposed in Avista's rate filings.

¹ Avista also serves approximately 25 retail electric customers in western Montana.

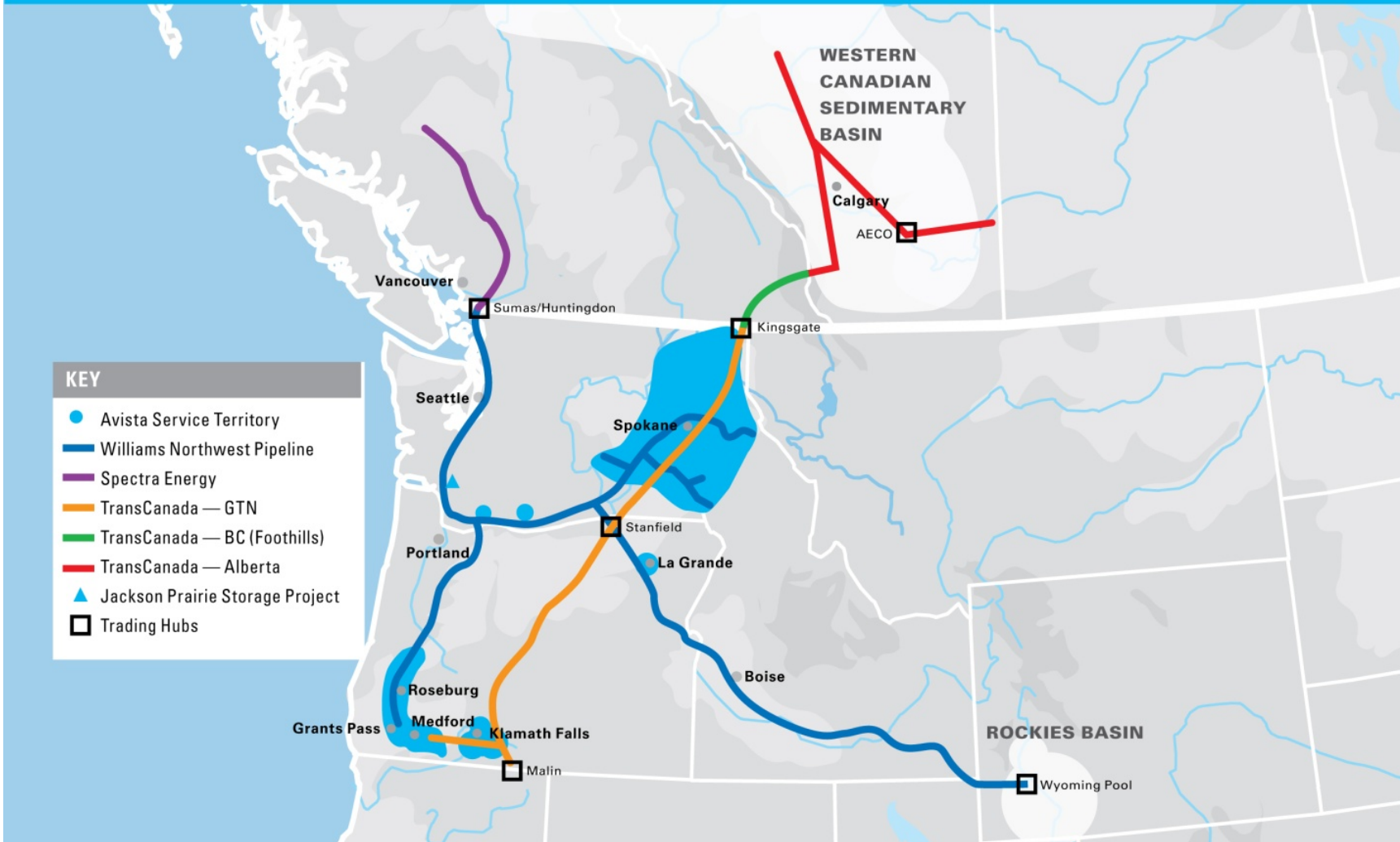


Avista Electric and Natural Gas Service Areas



as of 3/31/15

Avista Natural Gas Service Areas, Gas Fields, Trading Hubs and Major Pipelines

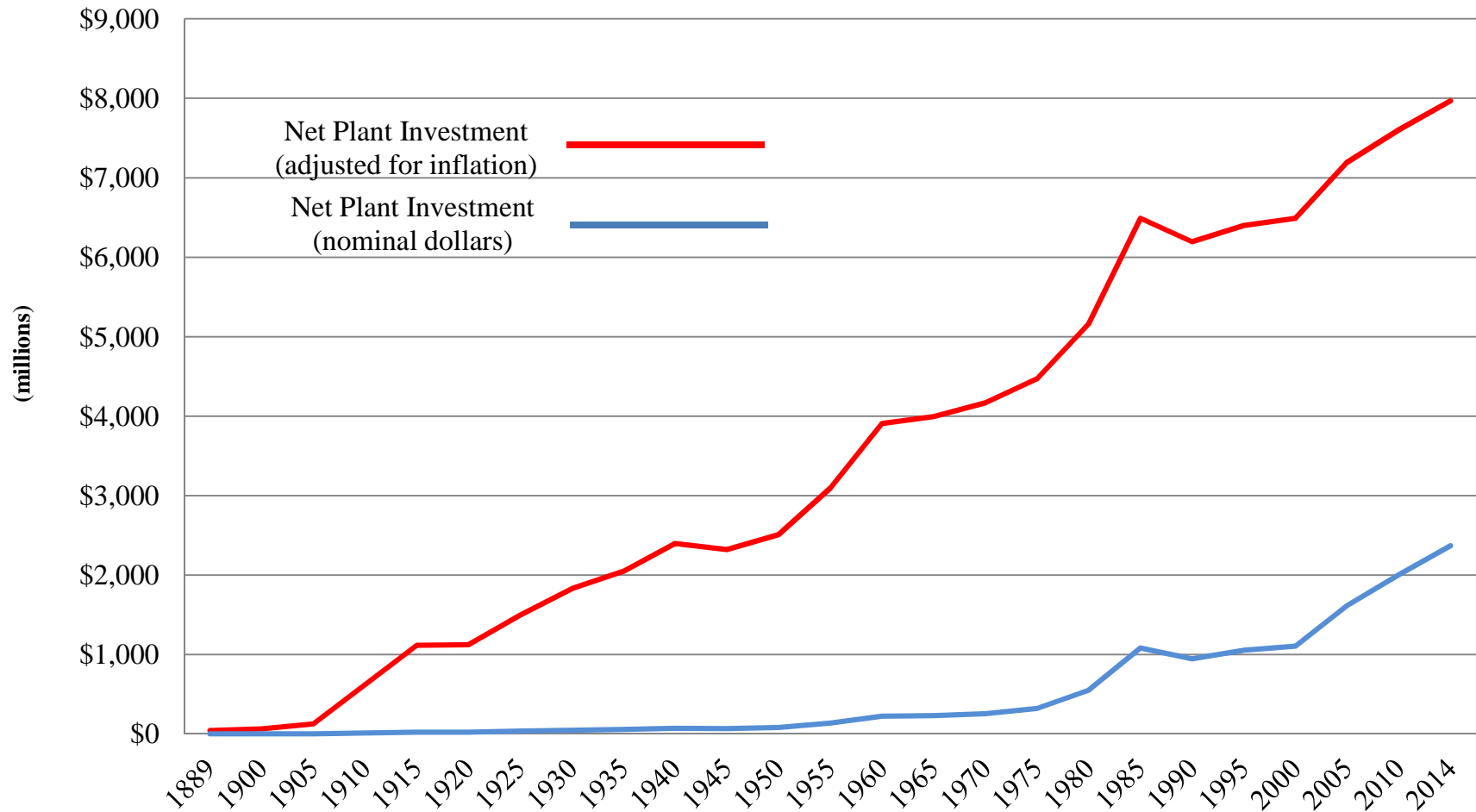


KEY

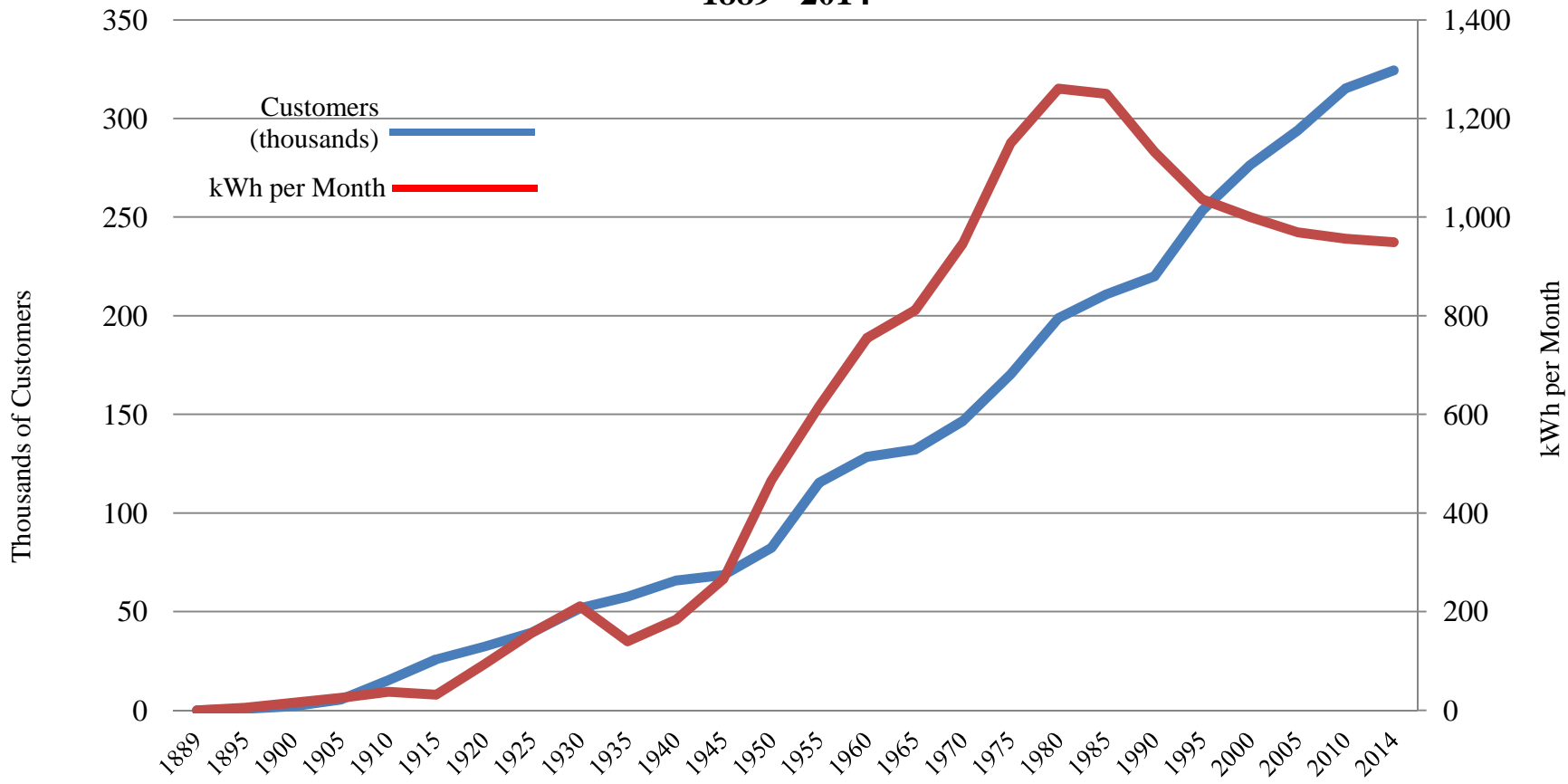
- Avista Service Territory
- Williams Northwest Pipeline
- Spectra Energy
- TransCanada — GTN
- TransCanada — BC (Foothills)
- TransCanada — Alberta
- ▲ Jackson Prairie Storage Project
- Trading Hubs

as of 3/31/2015

Avista Net Electric Plant Investment in Nominal & Real Dollars 1889 - 2014



Avista Number of Residential Customers & Average Monthly Use per Customer 1889 - 2014



Avista Average Monthly Residential Use per Customer & Average Electric Retail Rate

